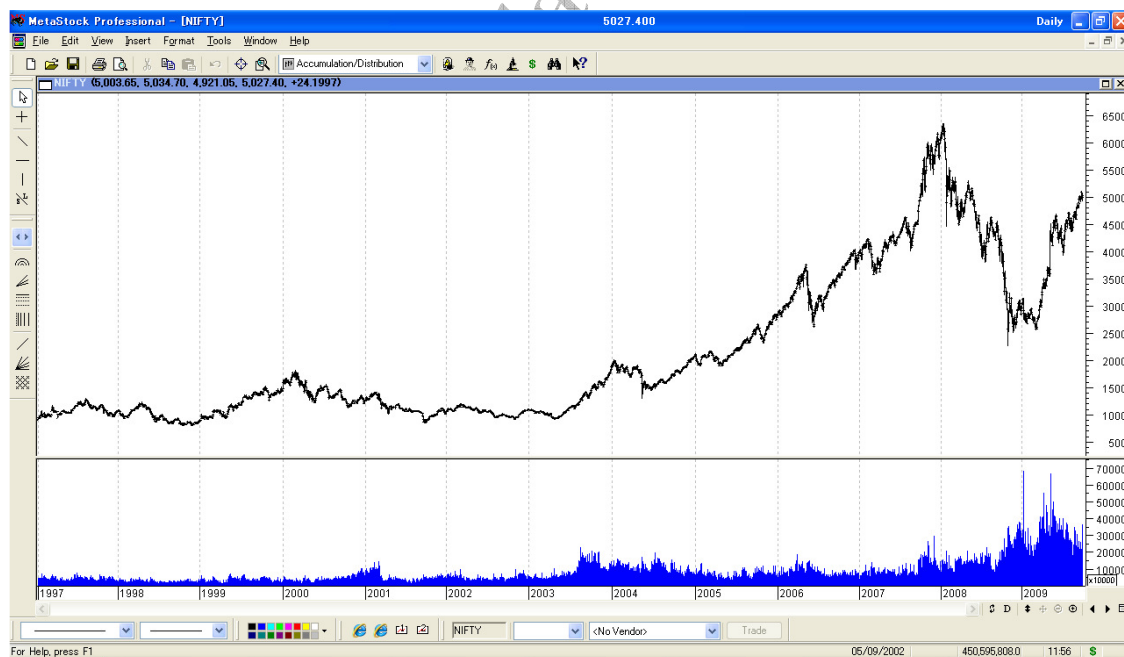


WWW.Market-Data-Provider.COM

V2.8



AMIBROKER



METASTOCK

WWW.Market-Data-Provider.COM

V2.8

User Manual:

1. Minimum Recommended settings

2. Installation Procedure

2.1 General-For Both AMIBROKER & METASTOCK Users.

2.2. Preparing Your AMIBROKER

2.3. Preparing Your METASTOCK

3. Using Software

3.1. AMIBROKER

3.1.1. EOD Data

3.1.2. RT Data / IEOD Data

3.1.3. How to Backfill EOD/Historical Intraday data

3.2. METASTOCK

3.2.1. EOD Data

3.2.2. RT Data / IEOD Data

WWW.Market-Data-Provider.COM

V2.8

3.3. Using Offline Mode (Synchronize Database)- Get Eod & IEod Data.

3.4. Procedure to run exploration mode

3.4.1. Tick Mode

3.4.2. Fno Cash Exploration Mode

3.4.3. Curr Future Exploration Mode

3.4.4. All Exploration Modes

3.4.5. MCX Exploration Mode

3.4.6. NSE + MCX Exploration Mode

4. Trading systems

4.1. Need AFL for AMIBROKER

4.2. Need Expert Systems For METASTOCK

5. Troubleshooting

5.1 How to start the Application

5.2 Getting fatal error on starting the application

5.3 Not getting any chart

5.4. Not Getting EOD/Corrupt EOD/Wrong EOD

WWW.Market-Data-Provider.COM

V2.8

5.5. Not Getting RT Data

5.6. Registration/Expiry Issues

5.7. Upgrading from Demo to Paid user

5.8. Need Ticker List

**5.9. Get Error AMIBROKER/METASTOCK Not
Running**

5.10. Need More Help

www.market-data-provider.com

WWW.Market-Data-Provider.COM

V2.8

1. Minimum Recommended Settings

Supported Versions:

- **AMIBROKER: V 4.92+**
- **METASTOCK:METASTOCK Professional V8+**
- **OS: Win XP SP2**
- **DOT Net Framework-2.0**
If you don't have, [Download .NET Framework](#) Directly from Microsoft website.
- **Then from our Software Installation Link, You can [Download Data Provider](#)**
- **Internet Speed: Min 128kbps.Recommended-256kbps+**

2. Installation Procedure



Go to Control Panel/ Regional and Language Settings:

Choose Language shown is : English (UK)

Date Time Format is: DD/MM/YYYY (Only in this Format, don't use –space etc.)

WWW.Market-Data-Provider.COM

V2.8

Regional and Language Options

Regional Options | Languages | Advanced

Standards and formats

This option affects how some programs format numbers, currencies, dates, and time.

Select an item to match its preferences, or click Customize to choose your own formats:

English (United Kingdom) [v] [Customize...]

Samples

Number:	123,456,789.00
Currency:	£123,456,789.00
Time:	13:29:31
Short date:	30/04/2009
Long date:	30 April 2009

Location

To help services provide you with local information, such as news and weather, select your present location:

India [v]

[OK] [Cancel] [Apply]

WWW.Market-Data-Provider.COM

V2.8

For AMIBROKER Users:

Please ensure that AMIBROKER is installed in %\Program Files \AMIBROKER where % stands for C: or D: or E: depending upon your current partition from which you boot your operating System.

No custom installation folder of AMIBROKER is supported

2.1 Installation Procedure (step by step pictures-General for Both AMIBROKER & METASTOCK Users)

Step 1: [Download application](#) and Read through this manual step By step (Which you are anyway doing)

Key Benefits From Stock Market Data Provider	Download Free Data feed Software For Getting Corrected EOD and Streaming Realtime Intraday Data From NSE / BSE /MCDEX/NCDEX.
<ol style="list-style-type: none">1. One Click Import of All NSE, BSE EOD Data-Direct To AMIBROKER /METASTOCK2. NSE EOD Data From 1994 and 1985 for BSE Cash Stocks3. PURIFIED EOD Data For Stock Splits/Bonuses etc.4. Includes All Major Indices5. Supports AMIBROKER V4.92 - V5.20 and METASTOCK Pro V8 - V10.16. World's LIGHTEST Data Feed Application-Just Around 0.2 MB. Just Compare with Other providers with 20-25MB of Installation.7. AUTO Streaming Of All RealTime Intraday Data-Direct To AMIBROKER / METASTOCK8. FREE NSE EOD Data From 1994 & 1985 for BSE Cash Stocks9. FREE 1/5 Mins NSE Intraday Historical IEOD Data For Cash Stocks10. FREE EOD Data For All FNO11. Corrected / PURIFIED EOD Data For Stock Splits/Bonuses etc.12. All NSE LISTED Cash STOCKS -(Unlike Other Providers who offer only 200 stocks)13. Includes All Major Indices14. Symbol Format- Same As NSE.15. Supports AMIBROKER V4.92 - V5.20 and METASTOCK	<p>Buy NSE Realtime Intraday RT & Split Bonus Purified EOD Data Buy NSE Historical EOD Data Buy Yahoo Finance Realtime Intraday & EOD Data Feed Buy Historical Intraday (IEOD)</p> <p>Please Note that The Software is Auto Registering. Hence Pay and Start Using Immediately without waiting for support to confirm your registration. Step 1: Installation Instructions(Step By Step Pictures) Get Zipped File Get PDF File</p> <p>Step 2: Both Demo & Paid Clients Download Application</p> <p>Demo Users: Validity 5 Calendar Days-All Stocks/Futures. Auto EOD/IEOD options Disabled. Demo constraints Applicable. Please DONT Use FIREFOX or OPERA to Download. USE IE 6 Or Maxthon</p> <p>Additional Resources:</p> <ol style="list-style-type: none">1. METASTOCK Users: Download Equis Database Unzip and Copy to C:/ Please Paste Equis Folder Directly Into C:/ And Not Inside Another Equis Folder After Unzipping. Download Metastock Auto Refresher.2. AMIBROKER users: Download NSE Symbol File Download NSE Futures Symbol

WWW.Market-Data-Provider.COM

V2.8

Step 2: You will be taken to Page as below.



Step 3: Click on Install. Warning: DO NOT USE FIREFOX OR OPERA OR CHROME. USE IE OR MAXTHON.

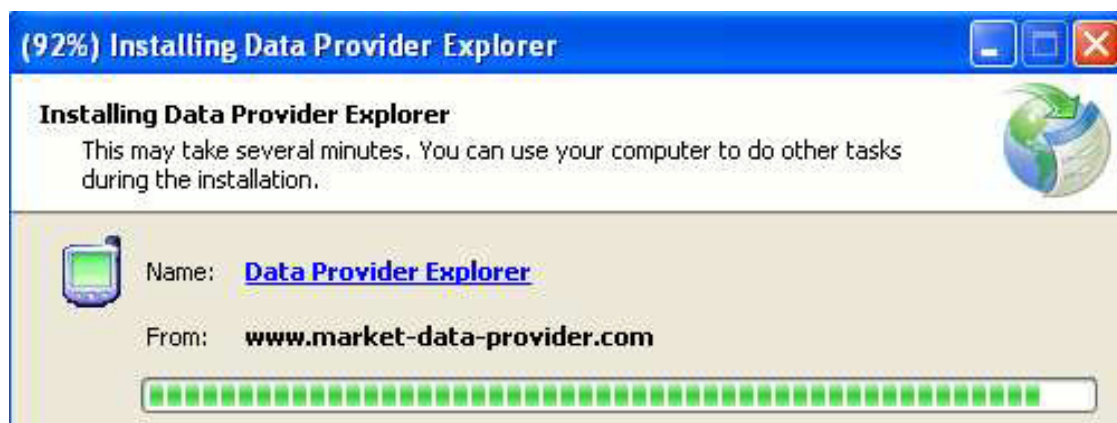
Step 4: It may give you a warning .Please accept and proceed to install



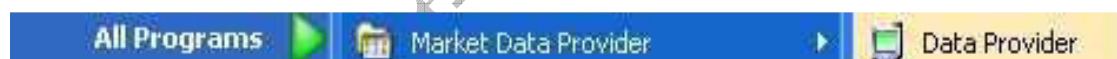
WWW.Market-Data-Provider.COM

V2.8

Step 5: Let the application download and install itself



Step 6: Once complete Application will auto start , you can also Go to Start/All Programs/Market Data Provider/Data Provider and click it.



Step 7: If You Are a New client then, you will get a registration form as below. Please fill this form with required details.

WWW.Market-Data-Provider.COM

V2.8



- 1) Name- Your Full Name or any name by which you will like to be addressed.
- 2) Email ID-Please put your official email id or preferably yahoo mail id.
- 3) Choose your Software, either Amibroker or Metastock.

WWW.Market-Data-Provider.COM

V2.8

Once you shall click auto register, it will give you a success message and message to restart Data Provider



Login 115 Error - If you get this error, you have a firewall which is . Please ensure, you have Norton Ghost, Zone alarm off and your language settings are as per following:



WWW.Market-Data-Provider.COM

V2.8

Following pop-up will appear if you were properly authenticated and above was successful.



WWW.Market-Data-Provider.COM

V2.8

2.2 Preparing Your AMIBROKER

Step 1:

1) Create A New Database As Above. Go To AMIBROKER.

Menu: File->New Database

Choose Path As: %\Program Files\ AMIBROKER \ RT.

Click Create



Only after creating the Database, Bottom options will be visible.

Database settings

AmiBroker database maintains information about symbols, industry groups, watch lists. It is necessary even if you are using external data source.

General

Database folder: C:\Program Files\AmiBroker\RT Browse...

☒ Load this database at startup Create

Data source

Data source: Data Provider 44313

Local data storage: ☒ Enable (recommended) ☐ Disable

Number of bars: 250000 (approx. 0 days, 7812 KB per symbol)

Base time interval: Tick

Flush cache Intraday settings Configure

OK Cancel

2) Choose Database Settings As Following.

Data Source: DATA PRO 44xxx (PRESENTLY DATA PRO 44320)

No of Bars- 250000

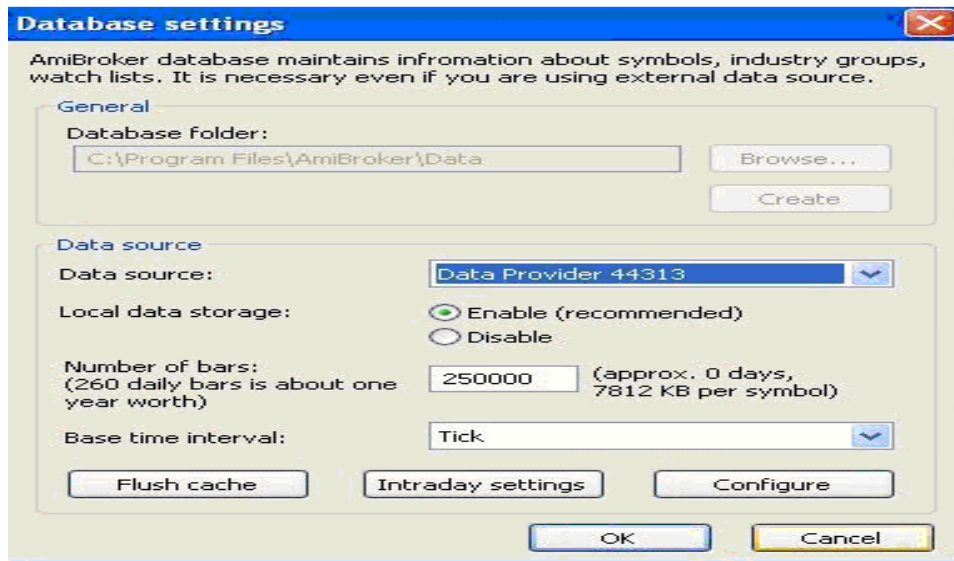
Base Time Interval- TICK (RECOMMENDED)

Demo users of AMIBROKER can't select this option. Please then use instead of Tick.

3) Click Okay

WWW.Market-Data-Provider.COM

V2.8



Step 2: Add SYMBOL in AMIBROKER using Menu: - SYMBOL-New –ACC. After doing that following should be displayed. The Name of the symbol in the Main Window- AMIBROKER-[NIFTY.....Daily]



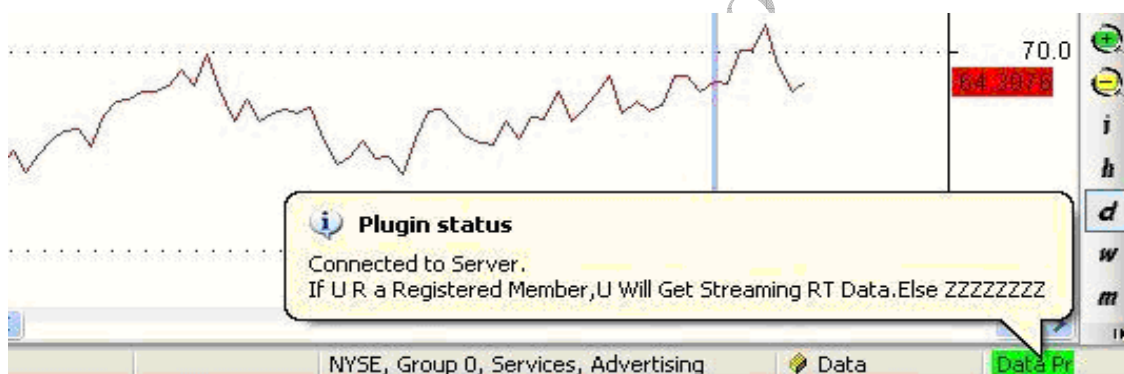
WWW.Market-Data-Provider.COM

V2.8

IMP: If it does not show like above then Click AMIBROKER/VIEW/ Charts. Basic Indicators/ Price (all in one). A pane will be added and Step 2 displayed. If still you can't see in AMIBROKER main window- Top Left Then Please check AMIBROKER version is greater than 4.92

Step 3:

In AMIBROKER, Please see Bottom Right: It will Show that Data Provider is logged and Green Button is seen. Please refer the picture below:



Step 4:

Your AMIBROKER is ready to use. Please go to Usage Guidelines In section 3.1 to see how to get data.

WWW.Market-Data-Provider.COM

V2.8

2.3 Preparing Your METASTOCK:

Step 1:

Please Ensure that METASTOCK database is downloaded from link:

[Metastock Download](#) and unzip same to C:\

After finishing you should have folders like C:\Equis\EOD\ and C:\Equis\RT

PLEASE DO NOT UNZIP TO ANOTHER EQUIS.

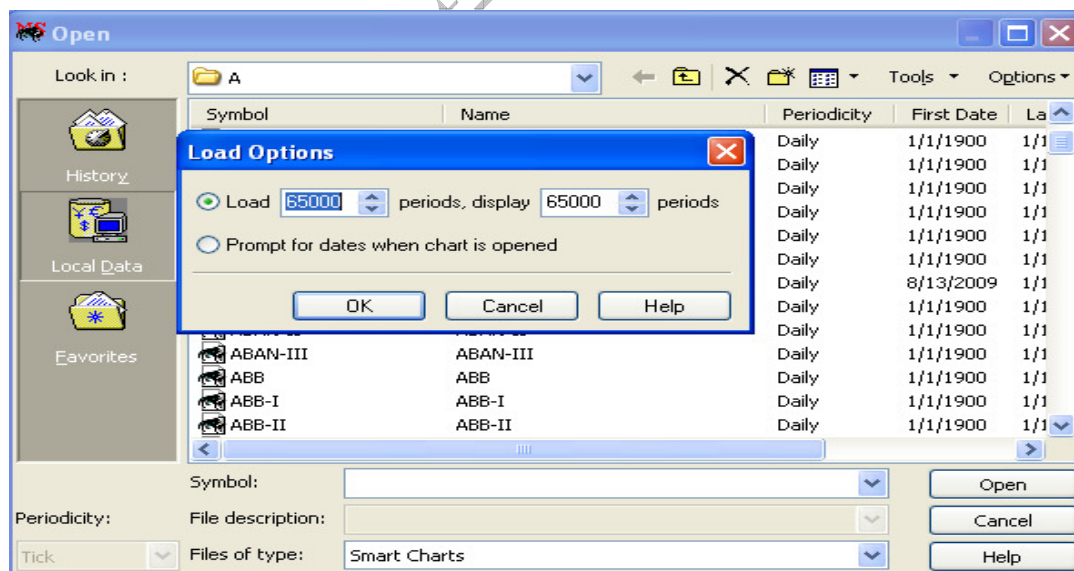
Example : FOLDER WHICH SHALL MAKE UR DATABASE AS C:/EQUIS/EQUIS is incorrect

Step2:

Please Open Your MetaStock & Set Number of Bars

Path:-File->Open->Options->Load Options

No. of Bars-65000.



WWW.Market-Data-Provider.COM

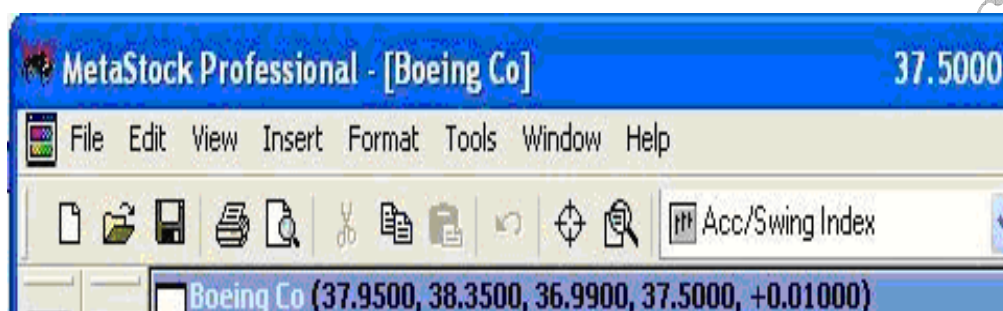
V2.8

Step3:

Please Open Your METASTOCK and load any symbol file from any of the folders. You should see the name of the symbol as shown below on picture's title:

METASTOCK PROFESSIONAL-[Boeing Co] or METASTOCK PROFESSIONAL-Boeing Co

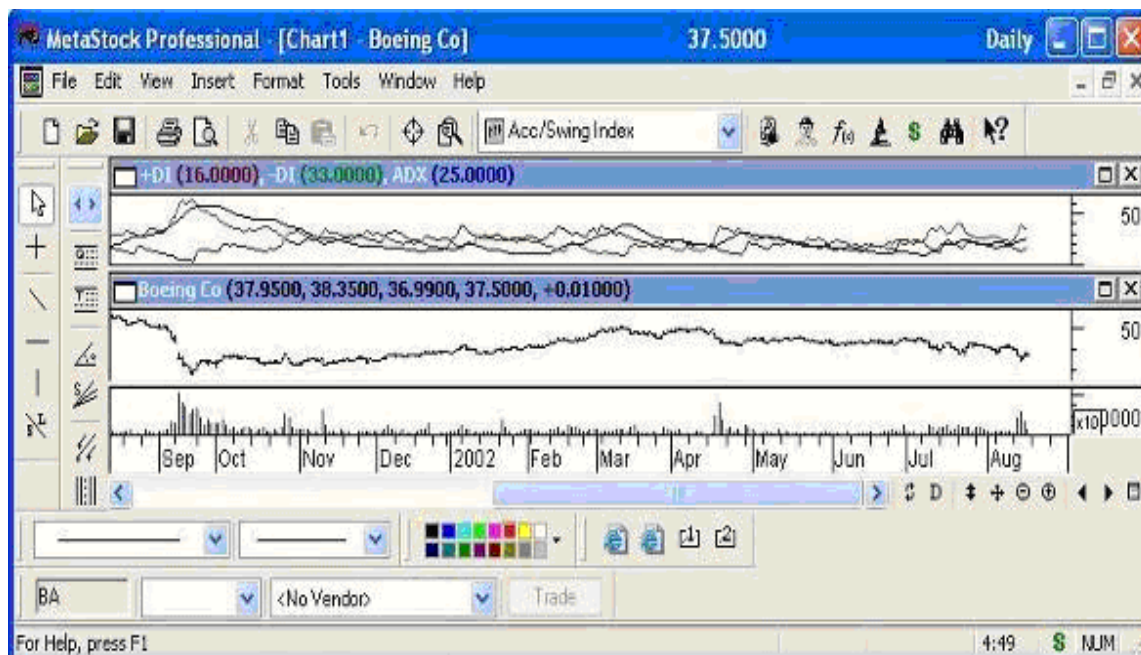
FOR EXAMPLE: (SEE PICTURE BELOW)



WWW.Market-Data-Provider.COM

V2.8

Wrong way to display the chart for a selected symbol (using templates):



You have directly applied template. Please close this and open it directly from database folders and then apply indicators.

Step 4:

Your METASTOCK is ready to use. Please refer to Usage guidelines in section 3.2 for getting data.

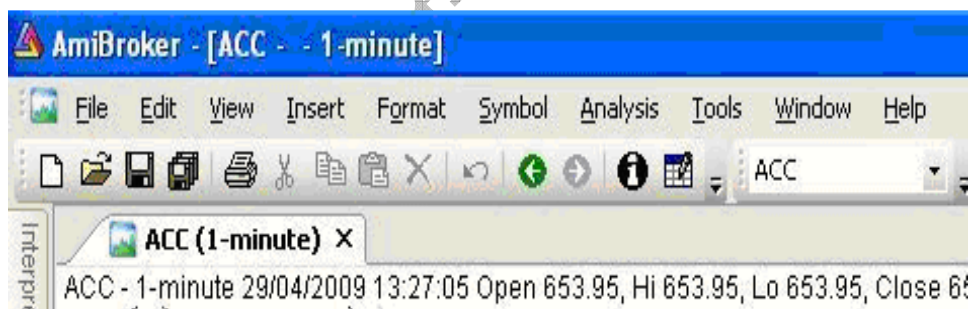
3. Using Software

3.1. Using Data Provider for AMIBROKER

IMP Note for Non Exploration Package:

- 1) The DP SEES what u SEE. So if you are seeing Nifty Chart, DP will get u data for NIFTY. As soon as you open another chart the Data for that Chart will be brought. You can have 20 charts open- BUT WHAT YOU HAVE PRESENTLY SELECTED and in VIEW- you shall get data for that chart. This is an intelligent system designed for benefit of users, to view the data with just one press of button there is no need of separate backfill or any preparation, DP handles everything and follows you with whatever chart you are viewing auto backfilling when you switch charts instantly. (Note: this restriction is not there for Exploration packages)

3.1.1 EOD for AMIBROKER: ONLINE MODE: Gets Chart instantly from 1994



- Open AMIBROKER. Choose your symbol from Drop down box.
- Make sure the name is displayed in title bar.

See Picture above

- Click Start/Market Data Provider/Data Provider.
- Once the application opens.
- Click on Top Left to change modes between

WWW.Market-Data-Provider.COM

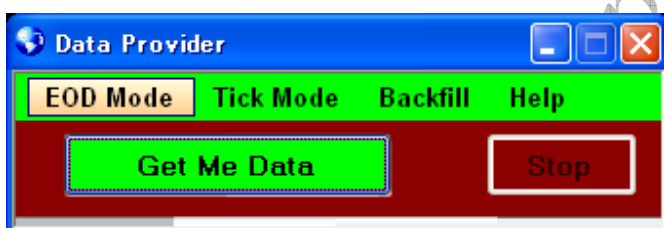
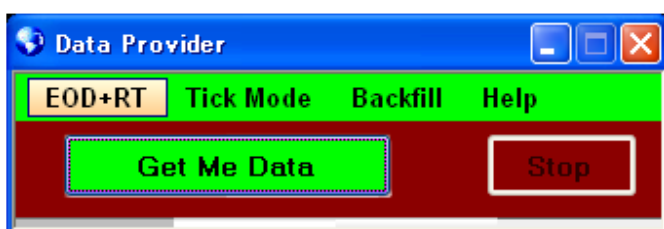
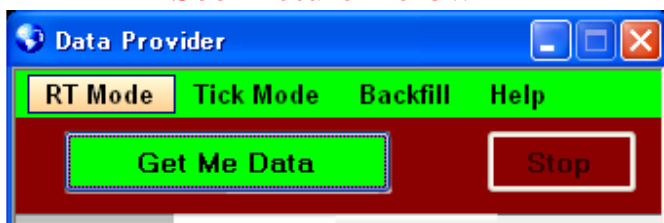
V2.8

RT Mode

EOD Mode

EOD + RT Mode (Only For Amibroker)

See Picture Below



When we run DP initially we see RT Mode
Click on RT Mode to change to EOD + RT
Click on EOD + RT to change to EOD Mode

On Clicking Get Me Data in the above modes your Get Me Data
button will show
Get- AMI-RT or Get-AMI-Eod +RT or Get- AMI-Eod

3.1.2 RT for AMIBROKER:

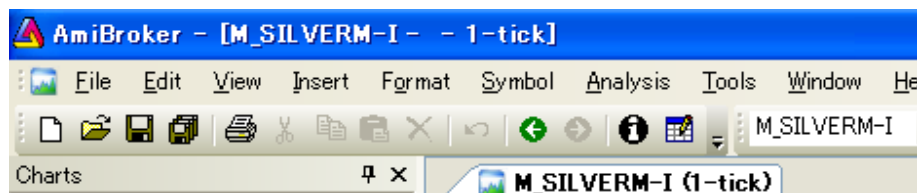
WWW.Market-Data-Provider.COM

V2.8

Open AMIBROKER

Make sure the name is displayed in title bar.

See Picture:

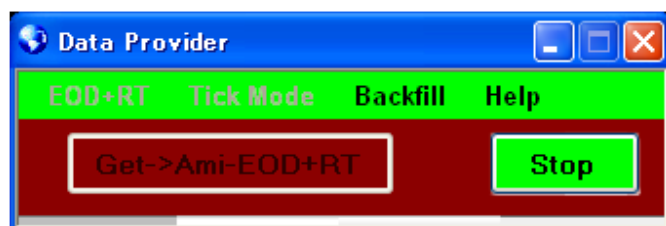


Click Start/Market Data Provider/Data Provider.

Once the application opens, Click Top LEFT UNTILL You See EOD+RT

Click -> Get Me Data.

Your Get Me Data button will show-> Get -> Ami - EOD+RT

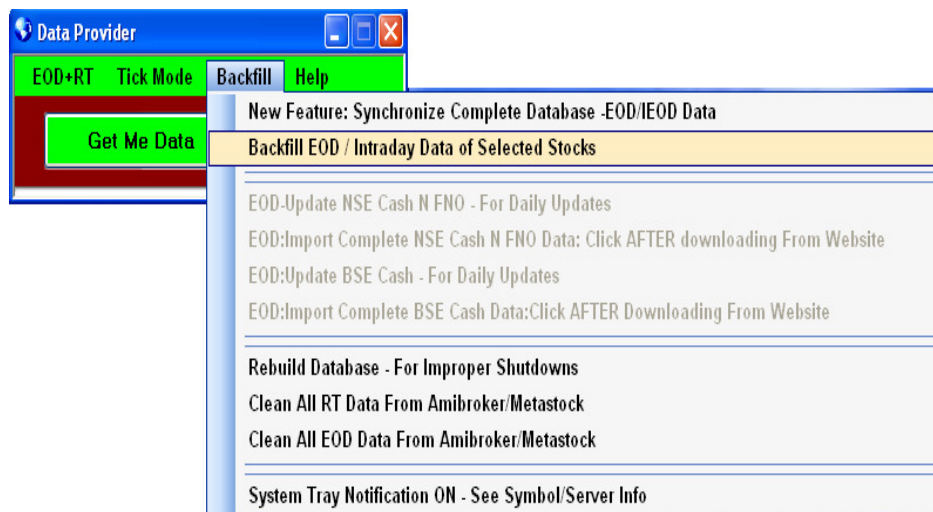


WWW.Market-Data-Provider.COM

V2.8

3.1.3 How to Backfill EOD/Historical Intraday data

Click Backfill menu- Go on Backfill EOD / Intraday Data of Selected Stocks.

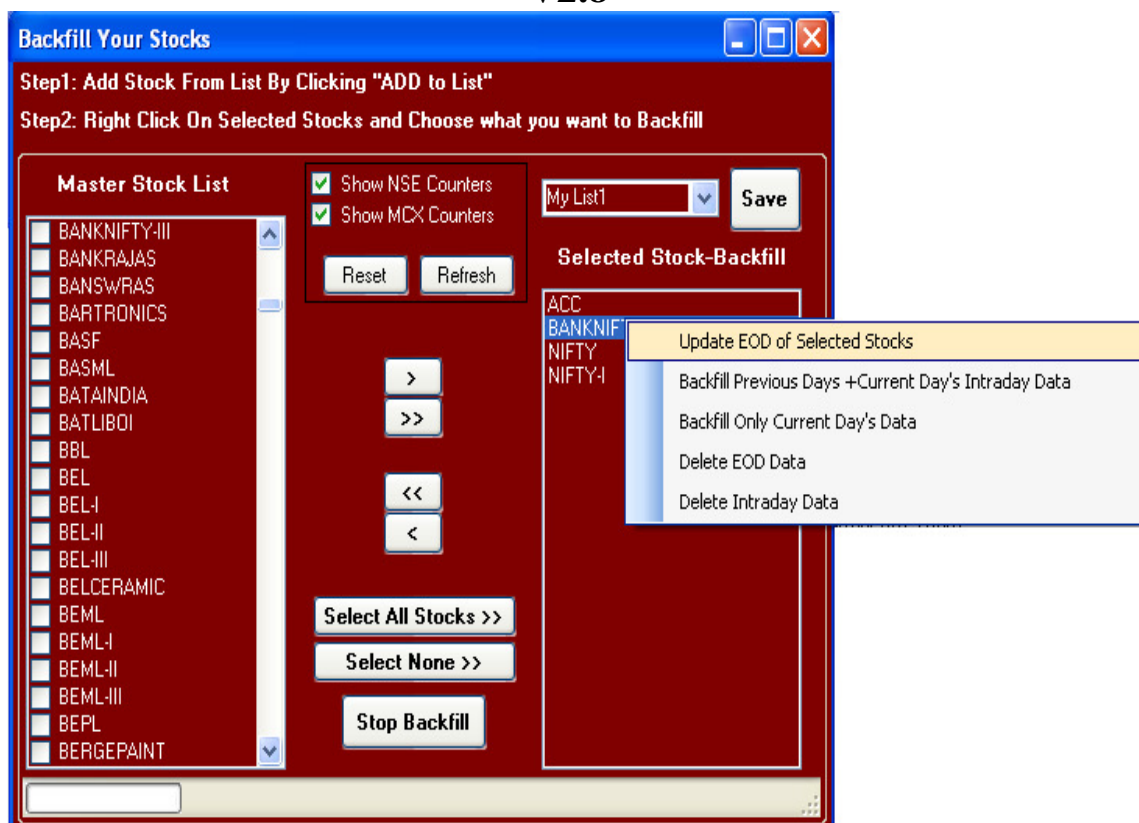


Select symbols from Dropdown list Box & using Add to List button add symbols to ListBox. Repeat same process to add more symbols. Then select all symbols & do right click on selected symbols. It display different options to Backfill your stocks as follows.

1. Update EOD of Selected Stocks.
2. Backfill Previous days +Current Day's Intraday Data.
3. Backfill Only Current day's data.
4. Delete EOD data.
5. Delete intraday data.

WWW.Market-Data-Provider.COM

V2.8



It shall start downloading data. Please be patient till the downloading is finished.

You shall get a confirmation message when downloading is finished.

WWW.Market-Data-Provider.COM

V2.8

3.2. Using Data Provider For METASTOCK:

IMP:

You CANNOT open more than one chart of same symbol i.e. if you have opened ACC chart from eod folder then same time you can not open ACC chart from RT folder.

- 2) The software SEES what you SEE. So if you are seeing Nifty Chart, the software will get u data for NIFTY. As soon as you open another chart the Data for that Chart will be brought. You can have 20 charts open- BUT WHAT YOU HAVE PRESENTLY SELECTED and in View- you shall get data for that chart. This is an intelligent system designed for benefit of users, to view the data with just one press of button there is no need of separate backfill or any preparation, DP handles everything and follows you with whatever chart you are viewing auto backfilling when you switch charts instantly.

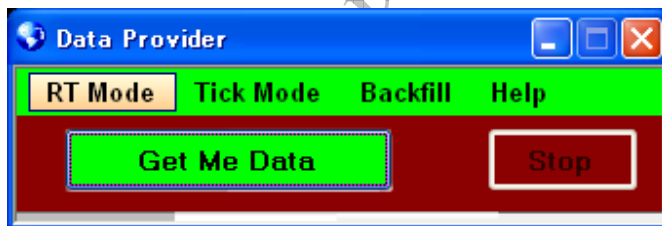
(Note: this restriction is not there for Exploration packages)

- 1) If Click Start/Market Data Provider/Data Provider

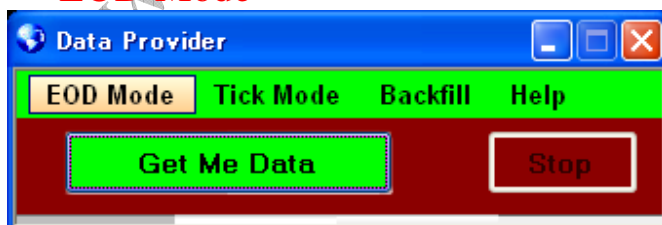
Once the application starts

You can change the mode by clicking on TOP left button.

RT Mode



EOD Mode

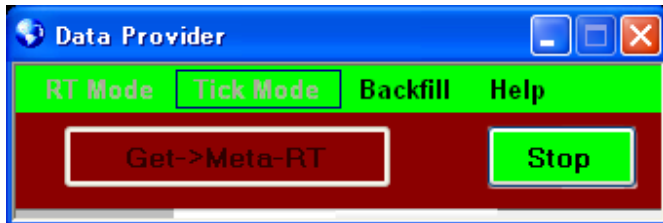


WWW.Market-Data-Provider.COM

V2.8

Click Get Me Data

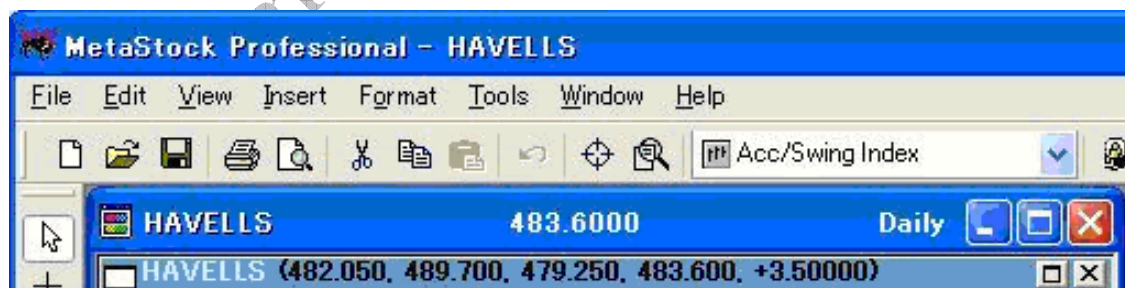
To get RT data open a Chart from RT folder, On pressing “Get Me Data” DP button will show Get ->Meta-RT.



To get EOD data open a Chart from EOD folder. On pressing “Get Me Data” DP button will show Get->Meta-EOD.



3.2.1 EOD for METASTOCK: ONLINE MODE: Gets instant Chart from 1994



Open METASTOCK. Choose your symbol from C:\Equis\EOD

Make sure the name is displayed in title bar: **SEE PICTURE Above:**

Do not open EOD and RT charts of same symbol in Metastock at the Same time when running Data Provider.

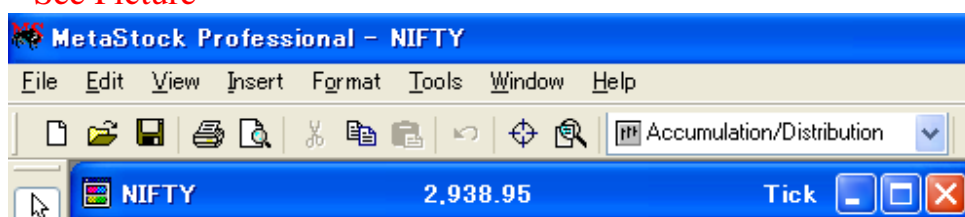
WWW.Market-Data-Provider.COM

V2.8

3.2.2 RT for METASTOCK:

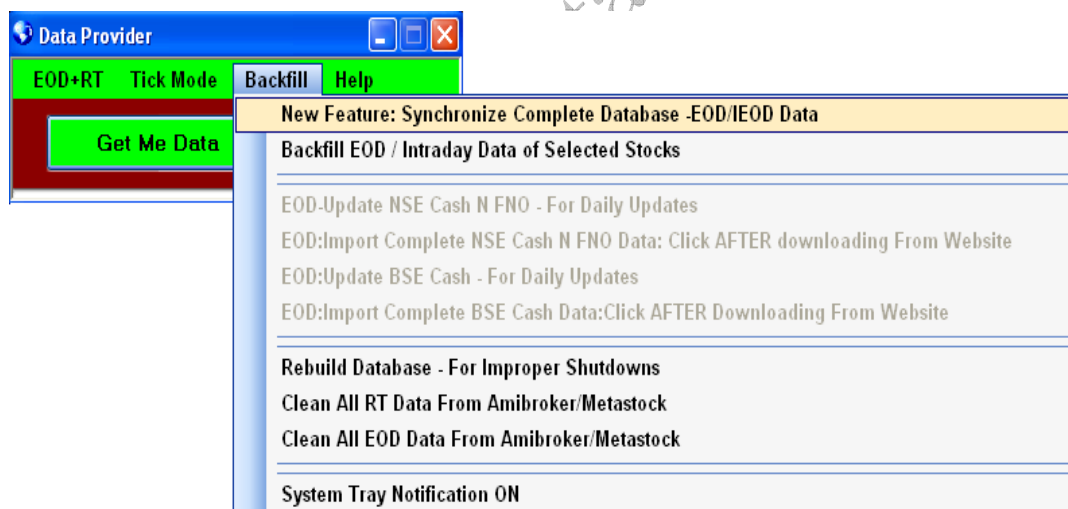
Open METASTOCK. Choose your Symbol from C: \Equis\RT\
Make sure the name is displayed in title bar.

See Picture



3.3 Using Offline Mode – Get EOD & IEOD Data Synchronize Database

Click Backfill menu- Go on New Feature: Synchronize complete
Database-Eod/IEOD Data



WWW.Market-Data-Provider.COM

V2.8

Synchronize Databases

EOD (Last Updated Till):

NSE Historical EOD data: 01 Jan 1990

MCX Historical EOD data: 01 Jan 2009

[Download Ready To Use EOD Database](#)

IEOD (Last Updated Till):

Cash Historical Intraday data: 07 Oct 2009

Future Historical Intraday data: 07 Oct 2009

MCX Historical Intraday Data: 12 Oct 2009

Choose Synchronization Option Below

Import All EOD Cash & Fno From 1994 - REQUIRED One Time Import

Start Stop

Synchronize Databases

EOD (Last Updated Till):

NSE Historical EOD data: 01 Jan 1990

MCX Historical EOD data: 01 Jan 2009

[Download Ready To Use EOD Database](#)

IEOD (Last Updated Till):

Cash Historical Intraday data: 07 Oct 2009

Future Historical Intraday data: 07 Oct 2009

MCX Historical Intraday Data: 12 Oct 2009

Choose Synchronization Option Below

Import All EOD Cash & Fno From 1994 - REQUIRED One Time Import

Update EOD Data Till Today-If less than 30 days of import

Update CASH IEOD Data Till Today

Update FUTURE IEOD Data Till Today

Update MCX EOD Till Today

Update MCX IEOD Till Today

WWW.Market-Data-Provider.COM

V2.8

Choose Synchronization option from Dropdown List Box.

It displays different options as follows:

- 1) Import All Eod Cash & Fno from 1994-Required one time import.
 - A) Download Complete Database from Link:
[Download Ready to Use Eod Database.](#)
 - B) Please unzip the file and store unzipped folder any where
On your computer.
 - C) Select in Drop down Options:” Import All Eod Cash & Fno from 1994-Required one time import” and then click on start button.
It shall start importing Data & after that DP shall automatically Restart.
- 2) Update Eod Data Till Today- if less than 30 days of import.
 - A) Before using this option, you must first import All Eod cash & fno data
As per above option.
 - B) Select this Option to update eod database (From Last updated Date to Current Date).
- 3) Update Cash IEOD data Till Today.

To update cash IEOD data from Last Updated date to Current date.
Please select this option and click Start.
- 4) Update Future IEOD data Till Today.

To update future IEOD data from Last Updated date to Current date.
Please select this option and click Start.
- 5) Update MCX EOD Till Today.

To update MCX EOD data from Last Updated date to Current date.
Please select this option and click Start.
- 6) Update MCX IEOD Till Today.

To update MCX IEOD data from Last Updated date to Current date.
Please select this option and click Start.

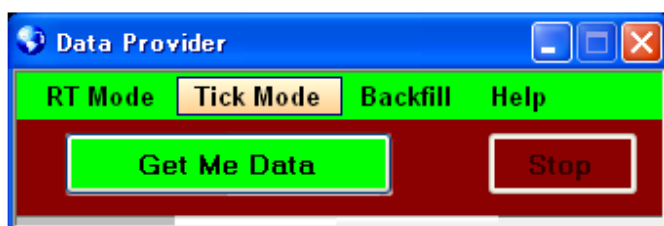
WWW.Market-Data-Provider.COM

V2.8

3.4 Procedure to run Exploration mode

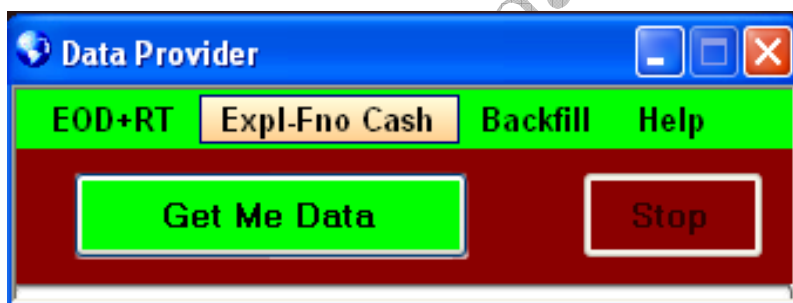
3.4.1 Tick Mode

Choose this mode to get automatic Backfill of EOD / RT / Intraday data for currently viewed stock in Amibroker or Metastock.



NOTE: For all below exploration modes, to backfill your list you do not need to Stop DP, leave it running with Get Me Data. Simultaneously backfill your desired list for Previous+ Current Day from Backfill Window.

3.4.2 Fno Cash Exploration Mode

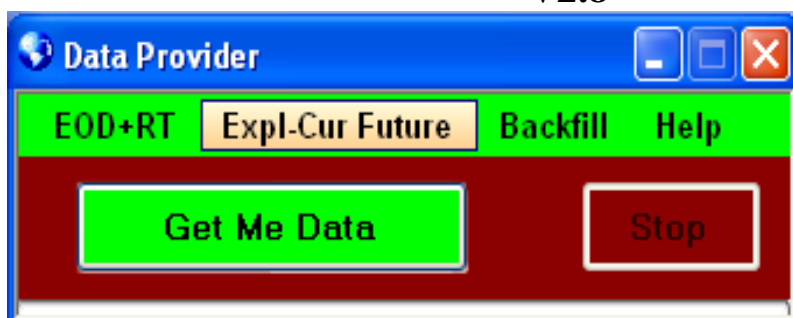


Choose this mode to get current streaming data of all FNO Cash Stocks. If you want to Backfill EOD/Historical Intraday data of any stock, you can do so even while running in exploration mode by going to Backfill menu on DP. Please refer to section 3.1.4.

3.4.3 Curr Future Exploration Mode

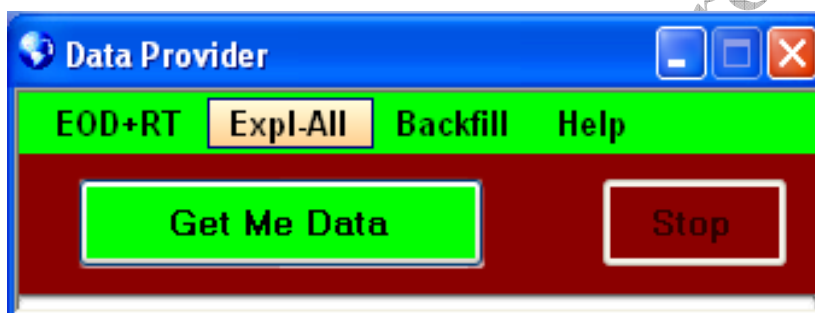
WWW.Market-Data-Provider.COM

V2.8



Choose this mode to get current streaming data of all Current Future . If you want to Backfill EOD/Historical Intraday data of any stock, you can do so even while running in exploration mode by going to Backfill menu on DP. Please refer to section 3.1.4.

3.4.4 All Exploration Modes

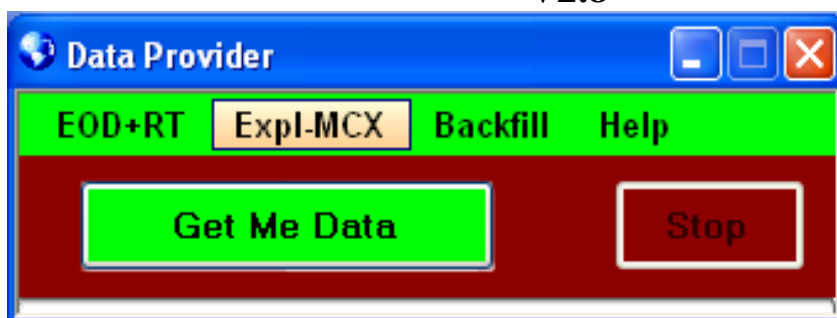


Choose this mode to get current streaming data of all NSE stocks + Future Stocks at a time. If you want to Backfill EOD/Historical Intraday data of any stock, you can do so even while running in exploration mode by going to Backfill menu on DP. Please refer to section 3.1.4.

3.4.5 MCX Exploration Mode

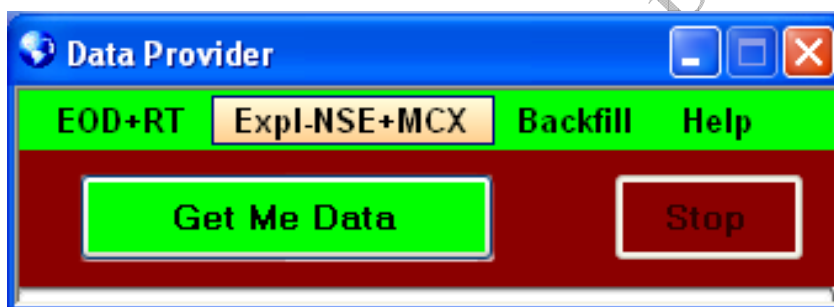
WWW.Market-Data-Provider.COM

V2.8



Choose this mode to get current streaming data of all MCX counters at the same time. If you want to Backfill MCX counters at the same time of any stock, you can do so even while running in exploration mode by going to Backfill menu on DP. Please refer to section 3.1.4

3.4.6 NSE + MCX Exploration Mode



Choose this mode to get current streaming data of all SP 500 cash stocks + current month futures + all MCX counter at the same time. If you want to Backfill EOD/Historical Intraday data of any stock, you can do so even while running in exploration mode by going to Backfill menu on DP. Please refer to section 3.1.4.

4. Trading systems

WWW.Market-Data-Provider.COM

V2.8

4.1 Need AFL for AMIBROKER

We provide AFL for all kinds of indicators. Please send us email
With your formulae and we shall send you the indicator. Please Visit the
Link for [indicators](#).

4.2 Need Expert Systems For METASTOCK

We provide AFL for all kinds of indicators. Please send us email
With your formulae and we shall send you the indicator. Please Visit
The link for [indicators](#).

www.market-data-provider.com

WWW.Market-Data-Provider.COM

V2.8

5. TROUBLESHOOTING

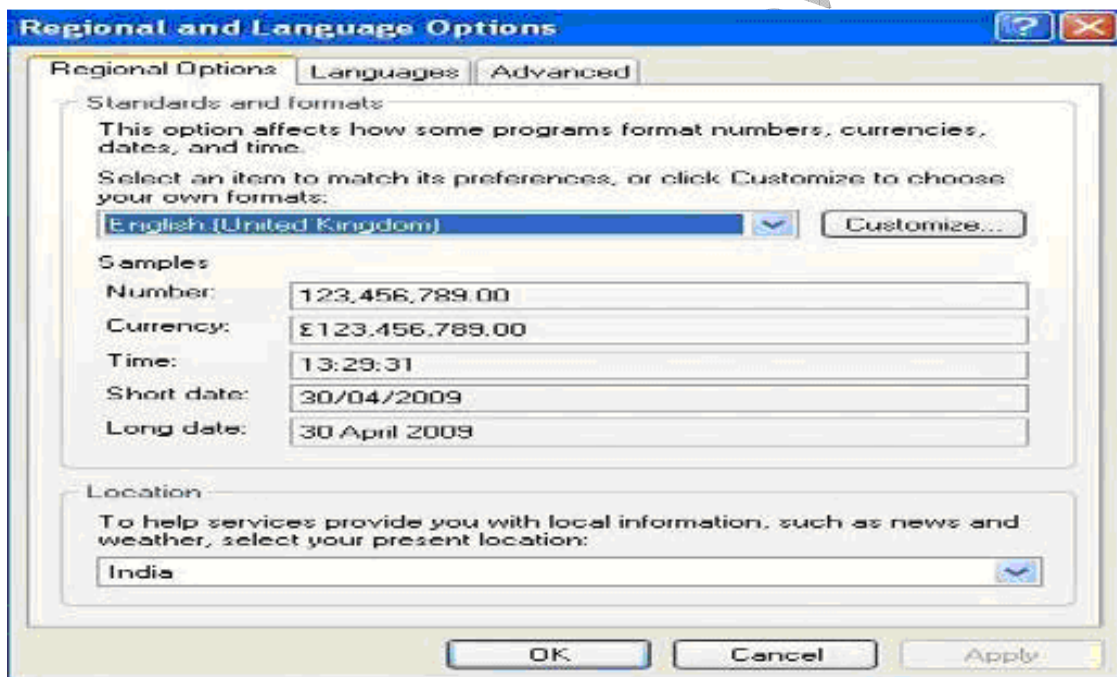
5.1. Can't find how to start the Application

Ans. Follow the diagram sequentially



5.2. I get fatal error on starting the application:

Ans. Check for your language and Date/Time settings in control panel.



5.3 Can't get any chart, everything is blank

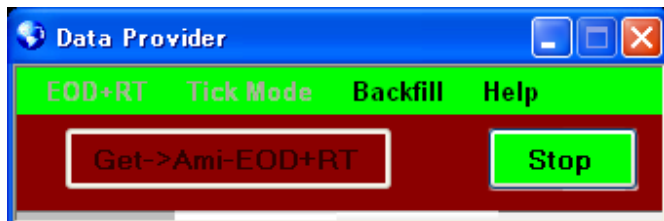
WWW.Market-Data-Provider.COM

V2.8

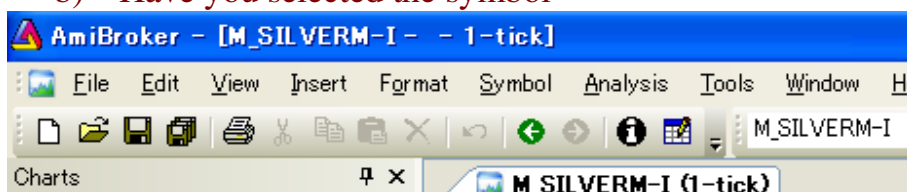
Ans. Check following step wise:

a) Is DP running?

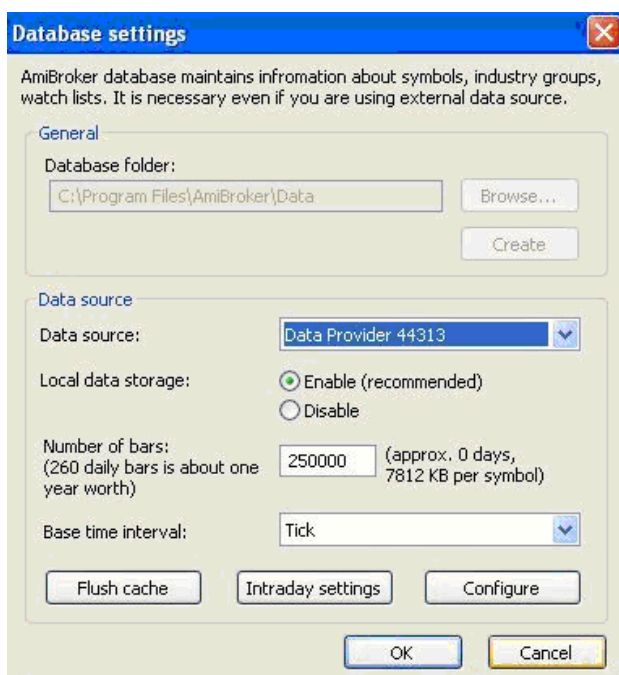
Have u clicked “Get Me Data “Button to show as following:



b) Have you selected the symbol



c) Have u checked your database settings



5.4 Can't Get EOD Data or EOD Data is coming wrong or not getting updated EOD data

Ans:

- 1) Choose HELP/Update My rights.
- 2) Choose Options/ Rebuild My database.
- 3) Please ensure settings as per Sec 3. are done properly.
- 4) Please check that symbol format is correct.

5.5. Can't Get RT Data or not getting updated RT data

Ans:

- 1) Choose HELP/Update My rights
- 2) Choose Options/ Rebuild My database.
- 3) Choose options /Maintenance /clean RT data.
- 4) Please ensure settings as per Sec 3. are done properly

5.6. Can't Get Registered.

Ans:

- 1) Choose HELP/Update My rights.
- 2) Please ensure that you are not behind a corporate firewall.
- 3) If you get Error 230,231, 232 then Internet is down / very slow or your Demo has expired.

5.7. Upgrading from Demo/paid users.

Ans:

Choose HELP/Update My rights. If your email ID used for Registration and payment are same, the server shall immediately give You your rights else please leave an email with your Pay pal receipt Number and your registration id. If you do not remember same, give Approx date of registration and support personnel shall clear your Entry.

WWW.Market-Data-Provider.COM

V2.8

5.8. Need Symbol List.

Ans:

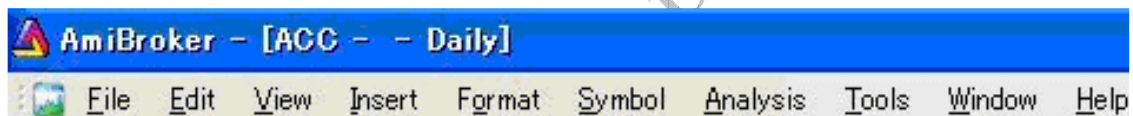
Please note that it is available as download on the download page.
Click on [Symbols](#) to get the List.

5.9. Error Message that AMIBROKER/ METASTOCK is not running although it is running. Is your software blind????

Ans:

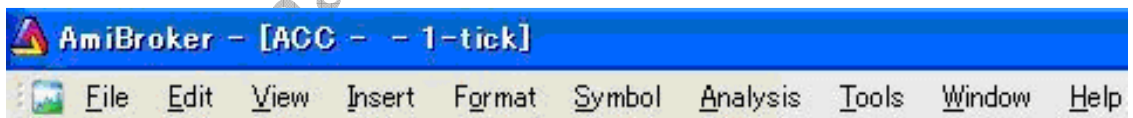
Yes Sir/Madam. It knows only one thing- AMIBROKER and the Symbol. Please see that following should be visible in AMIBROKER Window- The Name of the symbol in the Main Window- AMIBROKER-[ACC.....Daily]

AmiBroker:



OR

This will change depending on Tick, Minute, etc views
Note the symbol name shown in Title Bar.



WWW.Market-Data-Provider.COM

V2.8

MetaStock:



OR



5.10. How do I open my demo account?

Ans:

Register for new account & you will get 5 days demo version.

5.11 Need more help?

Ans:

Send an Email at care@Market-Data-Provider.com

Have A Nice Trading Day Ahead!!!